

Phoenix TRACON



Federal Aviation
Administration

Northern Arizona Airspace Transfer

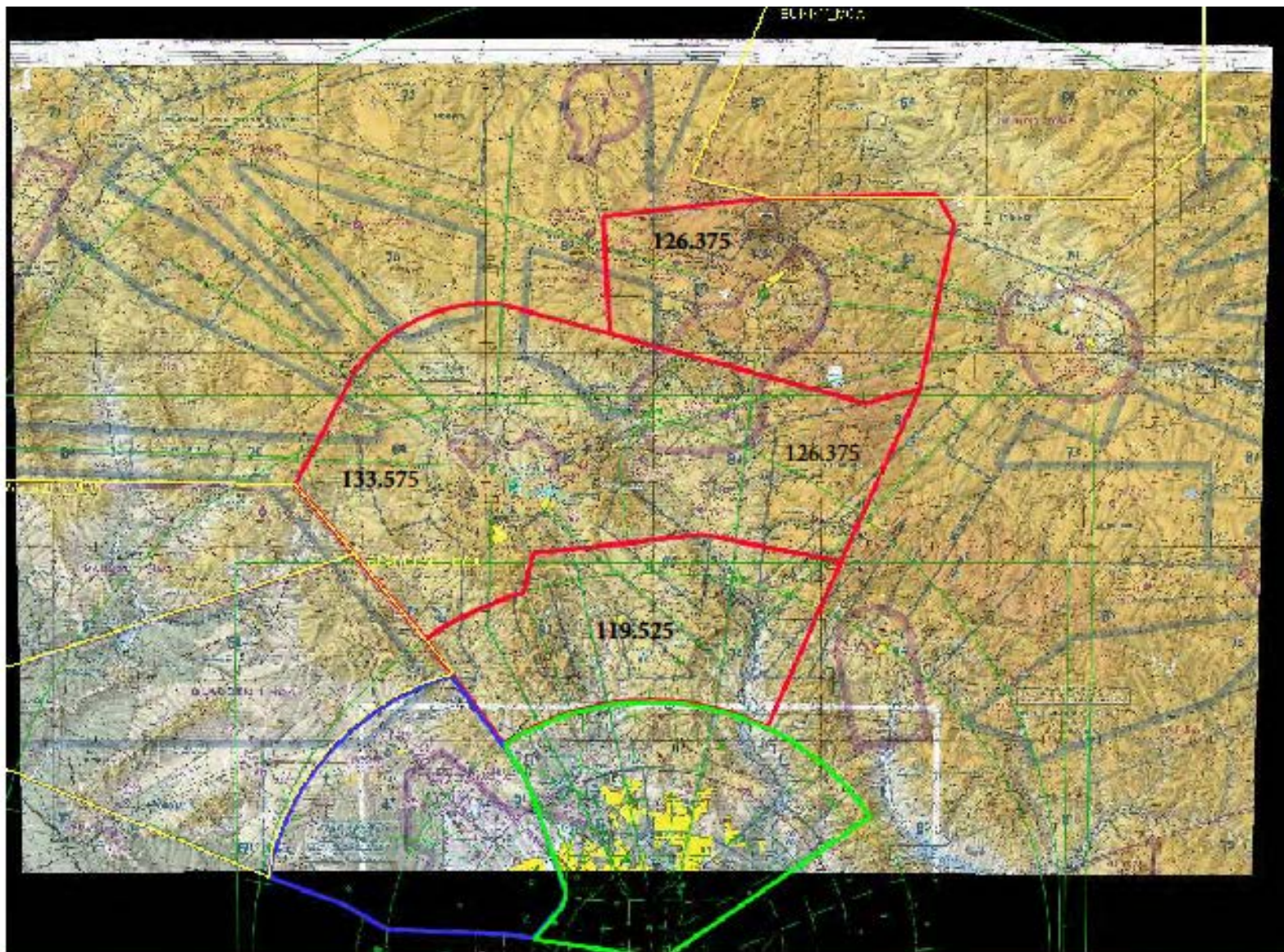
December 12, 2013
1300Z (0600 AST)

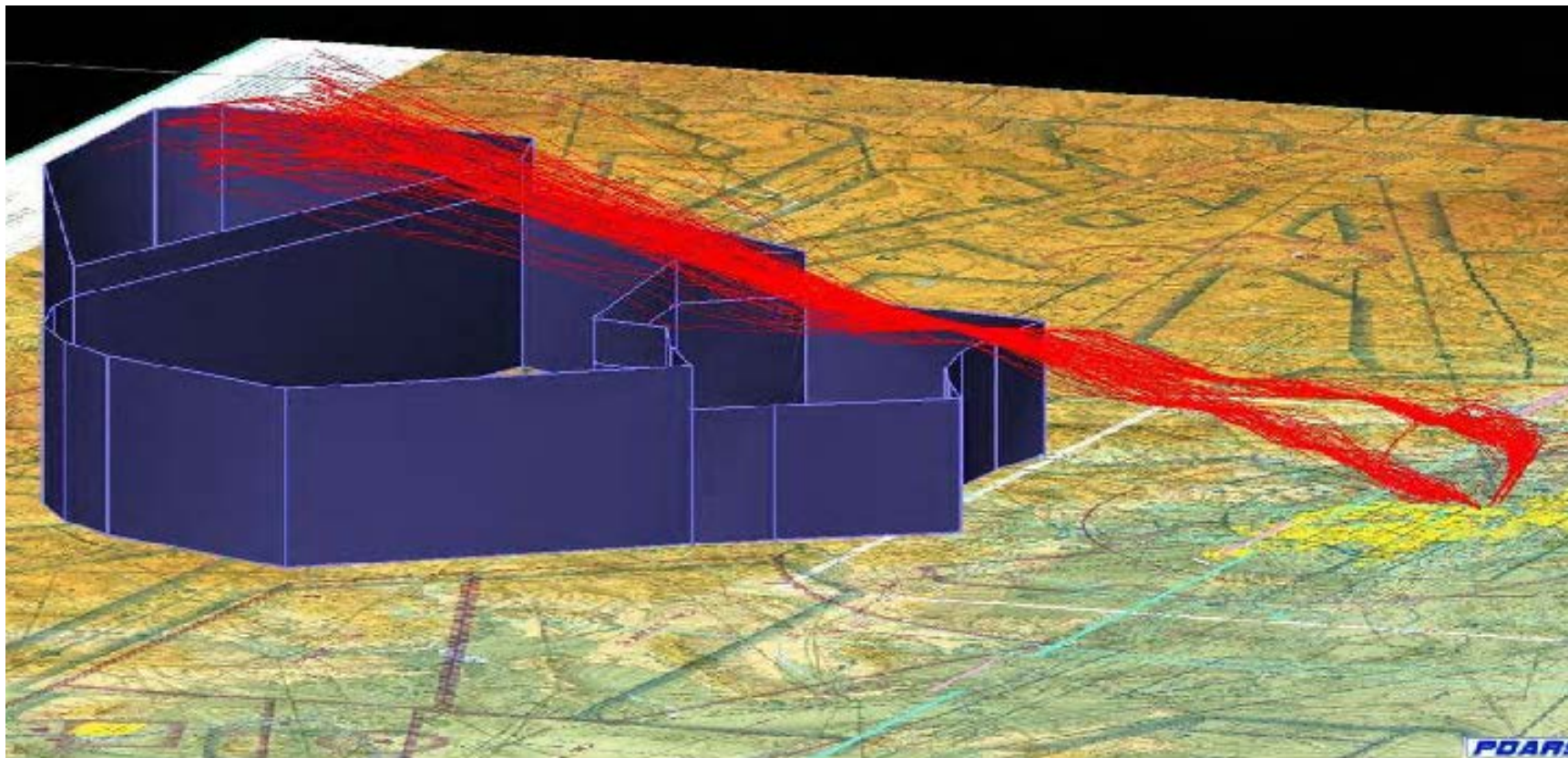
Presented to: Airport Operations & Tower Issues Safety Program - KSEZ

By: FAA Phoenix Terminal Radar Approach Control
Erik Bowring, Operations Support Manager
Curt Faulk, Staff Manager

Date: September 21, 2013

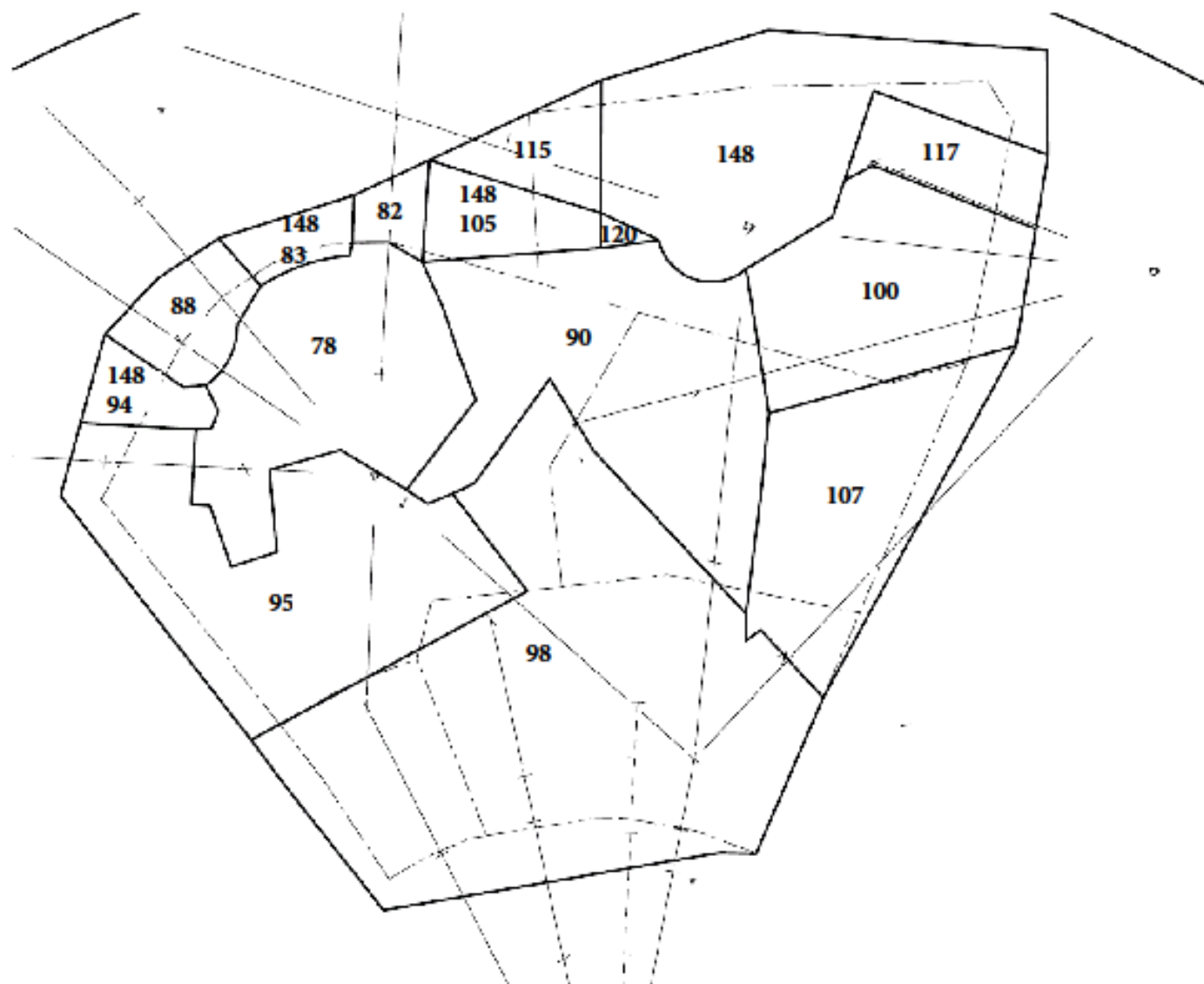






Descent profile of aircraft navigating to Phoenix Sky Harbor Airport via the MAIER RNAV STAR. Each red line is one aircraft.

The blue polygons depict the new Phoenix TRACON positions: KACHINA, JEROME, and CROWN



KACHINA 126.375 Near FLG
JEROME 133.575 Near PRC
CROWN 119.525 Crown King / Camp Verde

Hours of operation: 1300Z to 0500Z daily (0600 to 2200 AST)

Airspace returned to Albuquerque ARTCC outside of these hours

Facility Call Sign: “Phoenix Approach”



QUESTIONS/DISCUSSION



Curt Faulk

602.306.2502

curt.faulk@faa.gov

Chris Kesler

602.306.2545

chris.kesler@faa.gov

Erik Bowring

602.306.2514

erik.v.bowring@faa.gov

